

# COVID-19 VACCINATION DISTRIBUTION FAQS



## REPORT COVID-19 CONCERN AND ACCESS SERVICES

To report a concern about a business, school, or healthcare provider or to find a COVID-19 service, go to [www.sccCOVIDconcerns.org](http://www.sccCOVIDconcerns.org)



## COVID-19 BUSINESS CALL CENTER

For any inquiries related to your business or workplace operating under the current COVID-19 regulation in Santa Clara County call (408)961-5500, Monday~Friday, 8am-5pm



Feel free to contact us for more questions or concerns:  
[www.kacssv.org](http://www.kacssv.org)  
[info@kacssv.org](mailto:info@kacssv.org)  
(408)920-9733

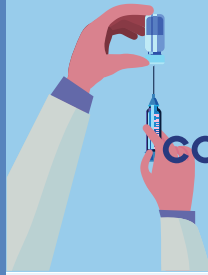


## LEARN HOW YOU CAN GET YOUR VACCINE AT:

[www.sccfreevax.org](http://www.sccfreevax.org)

## COVID-19 TESTING IN THE COUNTY:

[www.sccfreetest.org](http://www.sccfreetest.org)



## WHEN IS IT YOUR TURN?

There are four phases to this vaccine distribution. [Phase 1A,1B,1C, & 2]  
Check to see when or if you are eligible for any of the phases with this website:  
<https://covid19.ca.gov/vaccines/#When-can-I-get-vaccinated>



## WHAT WE CAN DO TO KEEP STAYING SAFE?

- 1) Get tested every month, if possible.
- 2) Wear face coverings/masks.
- 3) Use social distancing guidelines.
- 4) Wash your hands for more than 20 seconds and also use hand sanitizer!



## PHASES OF VACCINATION DISTRIBUTION



### PHASE 1A

Health Care Workers  
Long term care residents



## FACT ABOUT COVID-19:

You can spread COVID-19 even if you don't have any symptoms. This means COVID is spreading silently and sneakily. Protect yourself and your community.



**Text coronavirus to 211211 for phone and text services, available 24/7 in 150 languages.**

**Call 2-1-1 to speak with an operator about programs and services to assist families in Santa Clara County.**

### PHASE 1B

There are 2 tiers to this phase.



#### PHASE 1B TIER 1

- Individuals 65 and older (Varies on Hospital Insurance)
- Individuals 75 and older (Varies on Hospital Insurance)
- Education & Childcare Sectors
- Emergency Services Sector
- Food & Agriculture Sector



#### PHASE 1B TIER 2

- Transportation & Logistics Sector
- Industrial, Commercial, Residential, & Sheltering Facilities
- Critical Manufacturing
- Incarcerated or Homeless

Following Sectors:

- Water and wastewater
- Defense
- Energy
- Chemical and hazardous materials
- Communications and IT
- Financial Services
- Governmental operations / community-based essential functions

### PHASE 1C

- Individuals 50-64 years of age
- People 16-49 years of age who have an underlying health condition or disability